

CENTRAL COLLABORATIVE

STRATEGIC PRIORITIES & SCHOOL IMPROVEMENT
IMPACT

2023 - 2024



LAST YEAR...WHAT IMPACT DID WE HAVE AS A COLLABORATIVE?

- Collab avg GLD increased by 4.8% from 2022 to 64.8%
- Gap with national decreased from 5.2% to 2.5%
- % of children achieving the Prime goals was (COM, PSE,PHY) was 75.5% - 0.5% above national and 1.6% above local data
- in both Literacy and Maths % attainment was above local average

EARLY YEARS



- Phonics - an increase of 9% to 77% collab average
- RWM Exs increased by 7.3% to 51.3% (national increased by 2.6%)
- Reading Exs increased by 2.2% to 51.7% (national increased by 1.4%)
- Writing Exs increased by 7.8% to 55.4% (national by 2.5%)
- Maths Exs increased by 3% to 65.1% (national by 2.6%)

KEY STAGE 1

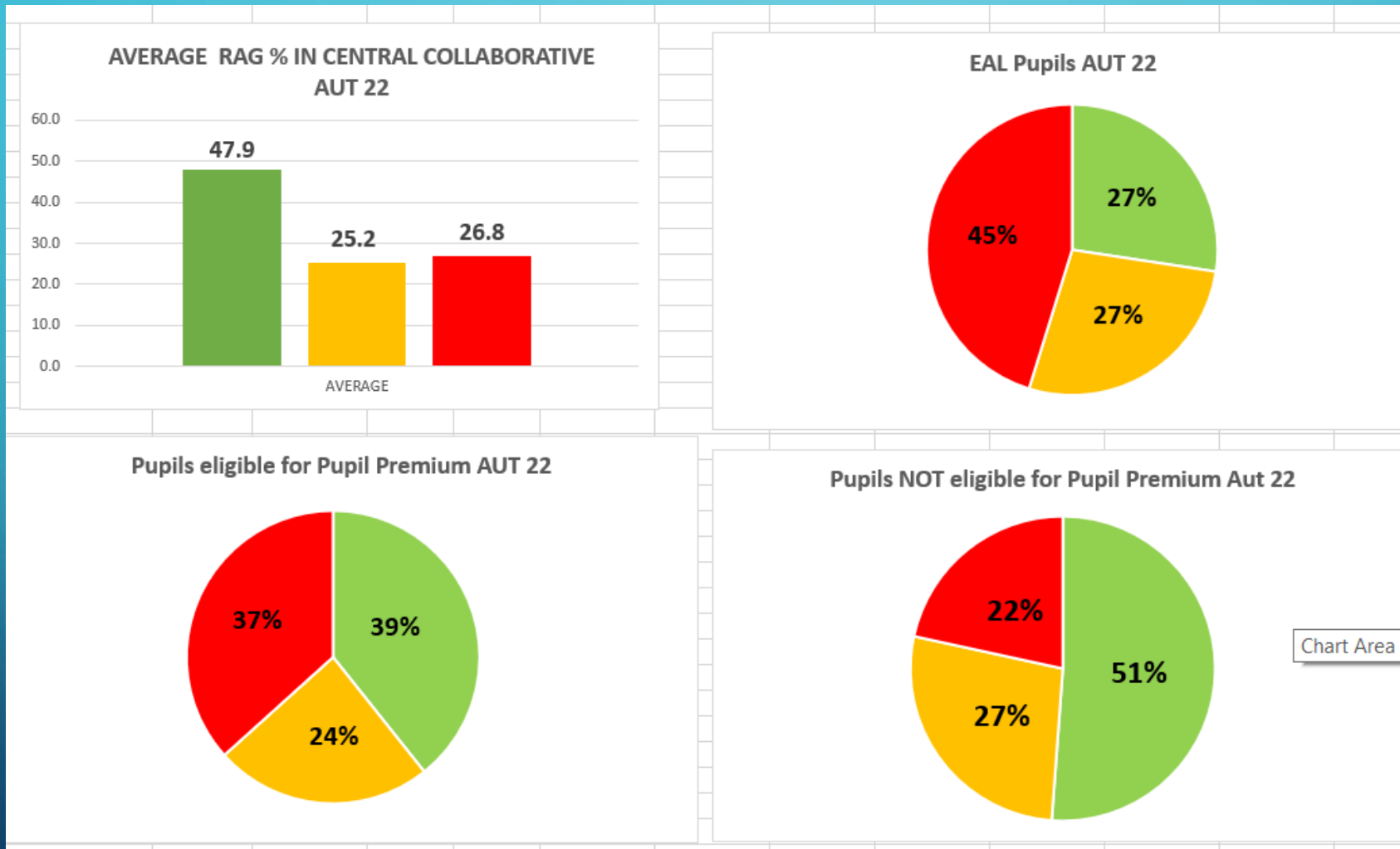


- RWM Exs increased by 7% to 64.5% (national increased by 0.8%)
- This was 5% above national and local
- Reading Exs decreased by 1.8% in line with the national decrease of 1.9%
- Writing Exs increased by 6.3% to 72.7% - national 71.5%
- Maths Exs increased by 5.3% to 75.3% (national 72.9%)

KEY STAGE 2

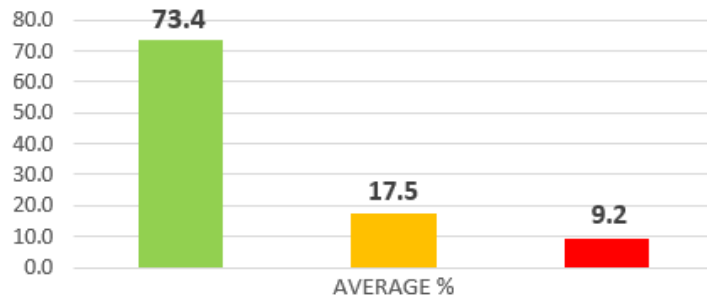


SPEECH & LANGUAGE: AUTUMN WELLCOMM DATA



SUMMER WELLCOMM DATA

AVERAGE RAG % IN CENTRAL COLLABORATIVE SUMMER 2023



EAL PUPILS SUMMER 2023

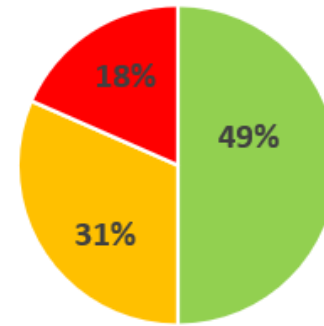
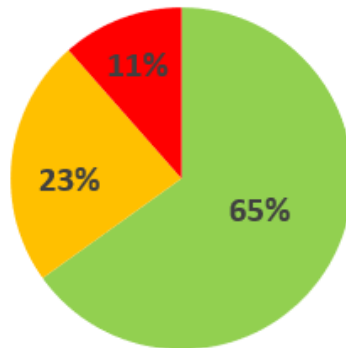
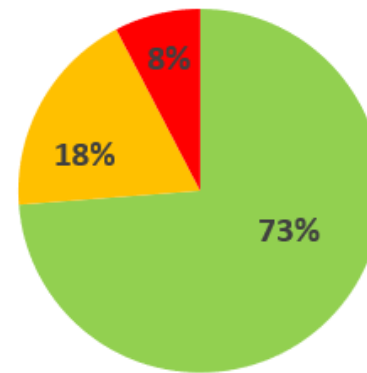


Chart Area

AVERAGE RAG % PUPILS ELIGIBLE FOR PUPIL PREMIUM SUMMER 2023



AVERAGE RAG % PUPILS NOT ELIGIBLE FOR PPG



Increase of 25.5% in pupils scoring Green

Reduction of 17.6% in pupils scoring Red

Increase of 26% in PPG Pupils scoring Green

Increase of 22% in non PPG pupils scoring Green

Gap between DIS and NDIS narrowed from 12% to 8%

Increase of 22% in EAL pupils scoring Green

WHAT ELSE DO WE HAVE TO CELEBRATE?

CPD & Network Sessions for all subjects / key roles in schools. Leaders feel supported and part of a strong group

A Focus on Leadership and Succession Planning: James Pembroke / Drew Povey

First Knowsley Wide Learning Mentor Conference ~ well received and requests to repeat

Growth of our Collaborative bringing more support, more expertise and more experience

Annual Celebration Event
Lots of positive feedback from schools and parents

3 schools had successful Ofsted Inspections



FEEDBACK...

Art Therapy - This workshop will benefit my 1:1 work with children and I will definitely be using art therapy as a resources to help children discuss and express what is going on in their lives in. The session was well delivered and evidenced the purposefulness of using Art Therapy.



Hopes Therapy Dog, this was a great service and gave insight into alternative therapy within schools. It was great to have feed back from other LM who use the therapy dogs.

I just wanted to say a massive thanks for asking us to work with your fantastic leaders yesterday. Drew had such a great time! He loved meeting you all and thoroughly enjoyed delivering the session.

It's always fantastic for us to work with such open and engaged leaders. So thank you - it was a real pleasure.

I attended the collaborative celebration event on Tuesday with my son who attends LDA and I thoroughly enjoyed the event. It was amazing to see so many schools coming together to celebrate the wonderful work our schools do, but also celebrate the children's success.

2023 KEY AREAS

Continued HT / Staff
Wellbeing

Leadership Development
through Coaching sessions &
supporting all other leaders
in schools

Curriculum ~ support SLs
to review Curriculum
Content / Ogden Trust
Partnership

Attendance / PAs
possible work alongside
the LA on an alternative
approach

Bespoke School Support:
supporting those schools in
the window for inspection
through 'healthchecks';
targeted support; Ofsted
updates

Outcomes
EY through the EPA Plan
KS1
SEND / Disadvantaged

COLLABORATIVE PROVISION 2023 - 2024

Quality of Education

Subject Lead Networks
EY Leads programme – EY2P
Disadvantaged Pupils Project
Continued focus on Speech & Language through EPA

Personal Development & Behaviour

Continued focus on Attendance ~ collation of local data and sharing of good practice
Possible support of an external partner - TBC

Central Collaborative School Improvement Strategy

Support & Development Networks

Deputy & Assistant Heads
SENCOs (& website hub)
Learning Mentors
School Business Managers

Leadership

School to School Coaching ~ to be established
Targeted Support for Amber / Red schools or schools requesting specific support
Leaders half termly meeting and annual conference
Ofsted 'Healthchecks' to support prioritising actions

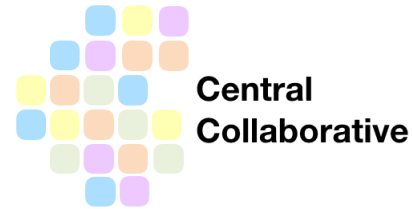
Who will our Collaborative partners be this year?



School Improvement
Liverpool



Edge Hill
University



EY2P
Early Years 2 Primary

THE THINKING ACADEMY



NEXUS
EDUCATION

